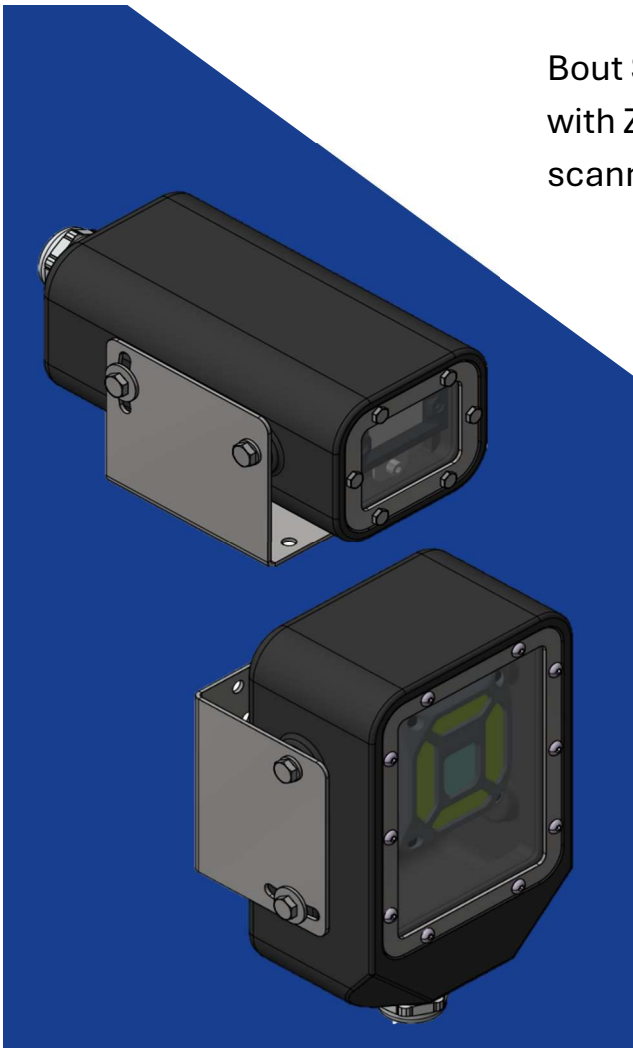


Zebra scanner enclosures

FS20/ VS20 & FS40 / VS40 scanners / Smart cameras

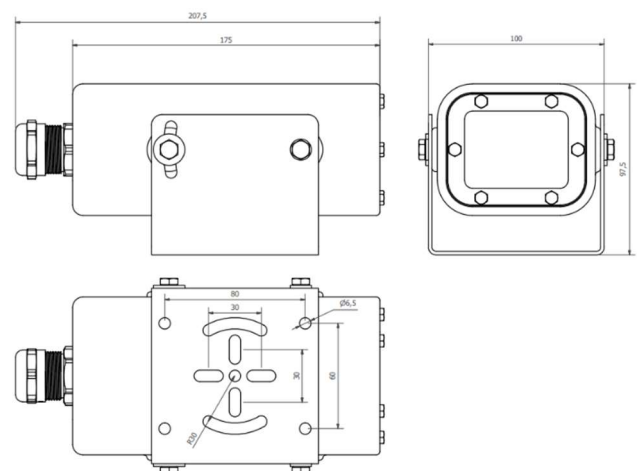
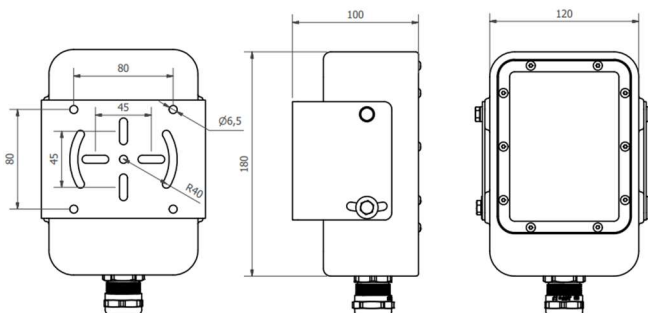
Bout Solutions enclosures are compatible with Zebra FS20 / VS20 / FS40 / VS40 scanners / smart cameras



| | |
|----------------------|--|
| Material: | Corrosion and seawater resistant nylon PA12 RAL9005 Protection IP67 |
| Mounting plate: | stainless steel, 2 mm thick |
| Ground: | Internal and external bolt in stainless steel |
| Ambient temperature: | -20°C - +40°C |
| Attachment: | Mounting bracket |
| Resistant: | Spray water and most cleaning agents |

Option:

- Heating element 24v/25w
- Ambient temperature -30°C - +55°C



Optimize your warehouse operations

Learn more about “Boutsolutions” solutions

Boutsolutions: contact info@boutsolutions.nl

